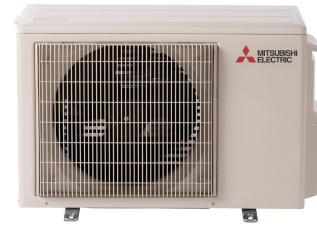


Submittal Data: MSZ-HX12NL MUZ-HX12NLH2

Job Name:	
Purchaser:	
Submitted To:	
Date:	

Location:	
Submitted By:	
Engineer:	
Application:	

Reference Approval Construction



Basic product info.

IDU Model Number	MSZ-HX12NL
ODU Model Number	MUZ-HX12NLH2
AHRI Certificate	216801494

Performance: Cooling at 95F (35C)

Cooling 95F Maximum Capacity	13400	Btu/h
Cooling 95F Rated Capacity	12000	Btu/h
Cooling 95F Minimum Capacity	3600	Btu/h
Cooling Maximum Power Input	1430	W
Cooling Rated Power Input	960	W
Cooling Minimum Power Input	230	W
Moisture removal at AHRI Cooling Rating Conditions	2.6	Pints/h
Sensible Heat Factor at AHRI Cooling Rating Conditions	0.76	-

Performance: Heating at 47F (8.3C)

Heating 47F Rated Capacity	12200	Btu/h
Heating 47F Minimum Capacity	4500	Btu/h
Heating 47F Maximum Power Input	2140	W
Heating 47F Rated Power Input	990	W
Heating 47F Minimum Power Input	250	W
COP 47F at Maximum Capacity	1.94	
COP 47F at Rated Condition	3.6	
Heating 47F Maximum Capacity	14200	Btu/h

Performance: Heating at 17F (-8.3C)

Heating 17F Maximum Capacity	9000	Btu/h
Heating 17F Rated Capacity	7800	Btu/h
Heating 17F Minimum Capacity	1710	Btu/h
Heating 17F Maximum Power Input	1670	W
Heating 17F Rated Power Input	900	W
COP 17F at Maximum capacity	1.56	
COP 17F at Rated Condition	2.52	
Heating 17F Minimum Power Input	310	W

Performance: Heating at 5F (-15C)

Heating 5F Maximum Capacity (H4Full)	8600	Btu/h
Heating 5F Rated Capacity (H4Full)	5800	Btu/h
Heating 5F Minimum Capacity (H4Full)	1640	Btu/h
Heating 5F Maximum Power Input (H4Full)	1400	W
Heating 5F Rated Power Input (H4Full)	560	W
Heating 5F Minimum Power Input (H4Full)	280	W
COP 5F at Maximum capacity (H4Full)	1.8	
COP 5F at Rated capacity (H4Full)	3.02	

Performance: Heating at -5F (-20.6C)

Heating -5F Maximum Capacity	8300	Btu/h
Heating -5F Minimum Capacity	1580	Btu/h
Heating -5F Maximum Power Input	1330	W
Heating -5F Minimum Power Input	250	W
COP -5F at Maximum Capacity	1.82	

ODU Operating Temp. Range

Cooling Thermal Re-start Temp	3	
Cooling Thermal Lock-out Temp	-1	
Heating Thermal Re-start Temp	-4	
Heating Thermal Lock-out Temp	-14	
Cooling Thermal Re-start Temp (C)	-16.3	C
Cooling Thermal Re-start Temp (F)	3 / -16.1	F° / C°
Cooling Thermal Lock-out Temp (C)	-18.5	C
Cooling Thermal Lock-out Temp (F)	-1 / -18.3	F° / C°
Heating Thermal Re-start Temp (F)	-4 / -20	F° / C°
Heating Thermal Lock-out Temp (C)	-25.6	C
Heating Thermal Lock-out Temp (F)	-14 / -25.6	F° / C°
Heating Thermal Re-start Temp (C)	-20.1	C

Rebates

Energy Star 6.1 Certified	Yes	
Energy Star 6.1 Cold Climate Certified	Yes	
NEEP Certification	Yes	

Efficiency

SEER2	20	
EER2	12.5	
HSPF2 (IV)	10	
HSPF2 (V)	9.7	

Electrical

Recommended Fuse/Breaker Size	20	
ODU Minimum Circuit Ampacity (MCA)	16	A
ODU Maximum Over Current Protection (MOCP) = MOP = Maximum Fuse	28	A
IDU Minimum Circuit Ampacity (MCA) if Powered Separate	1	A
Rated Voltage (Min)	208	V AC
Rated Voltage (Max)	230	V AC

Indoor Unit

IDU Airflow Rate at Cooling, Dry 1	168	CFM
IDU Airflow Rate at Cooling, Dry 2	246	CFM
IDU Airflow Rate at Cooling, Dry 3	338	CFM
IDU Airflow Rate at Cooling, Dry 4	475	CFM
IDU Airflow Rate at Cooling, Wet 1	151	CFM
IDU Airflow Rate at Cooling, Wet 2	221	CFM
IDU Airflow Rate at Cooling, Wet 3	304	CFM
IDU Airflow Rate at Heating 1	172	CFM
IDU Airflow Rate at Heating 2	241	CFM
IDU Airflow Rate at Heating 3	348	CFM
IDU Airflow Rate at Heating 4	401	CFM
IDU SPL at Cooling 4	47	dB (A)
External Finish (Munsell No. in case painting)	Munsell 0.7PB 9.2/0.4	
IDU Unit Dimension W	33	inch
IDU Unit Dimension D	9 4/16	inch
IDU Unit Dimension H	11 1/16	inch
IDU Unit Weight	20	lbs
IDU Airflow Rate at Cooling, Wet 4	428	CFM
Drain Pipe Size (Outer size)	11/16	inch

Outdoor Unit

ODU Fan Motor Full Load Amperage (FLA) (if data available)	0.71	A
ODU Fan Motor Output	0.1	HP
Base Pan Heater installed (Built-in or Optional)	Built-in	
ODU Unit Dimension W	31 8/16	inch
ODU Unit Dimension D	11 4/16	inch
ODU Unit Dimension H	21 5/8	inch
ODU Unit Weight	82	lbs

Piping

Gas Pipe Size O.D. [Flared]	3/8	inch
Liquid Pipe Size O.D. [Flared]	1/4	inch
Maximum Piping Length	65	ft
Maximum Height Difference	40	ft

Refrigerant

Refrigerant Type	R454B	
Maximum Pre-charged Piping Length	25	ft
Pre-charged Refrigerant Amount (kg)	0.95	
Pre-charged Refrigerant Amount (lbs)	2.1	
Pre-charged Refrigerant Amount (oz)	33.5	

Accessories

Handheld Remote Controller English	MAC-FL115M-E	
Handheld Remote Controller French	MAC-FL215M-E	
Wall Mount controller	PAR-42MAACAB (REQUIRES SYSTEM INTERFACE)	
Simple Wall MA Controller	PAC-YT53CRAU-J	
Simple CN105 Controller	PAC-SDW01	
Microparticle Catching Filter	MAC-EMF515T-E	
Electrostatic Anti-allergy Enzyme Filter	MAC-2320FT	
System Interface (Full Control)	MAC-334IF-E	
System Interface (Functional Control)	MAC-497IF-E	
NA T-STAT interface	RMF-CA200	
Wi-Fi Adapter	PAC-USWHS002	
NA T-STAT Interface	RMF-CA200	

AHRI Rated Conditions (Rated data is determined at a fixed compressor speed) (* Windscreens required for cooling operations below 23°F (-5°C))

¹ Cooling (Indoor // Outdoor) 80°F (26.6°C) DB, 67°F (19.4°C) WB // 95°F (35°C) DB, 75°F (23.9°C) WB

² Heating at 47°F (8.3°C) (Indoor // Outdoor) 70°F (21.1°C) DB, 60°F (15.6°C) WB // 47°F (8.3°C) DB, 43°F (6.1°C) WB

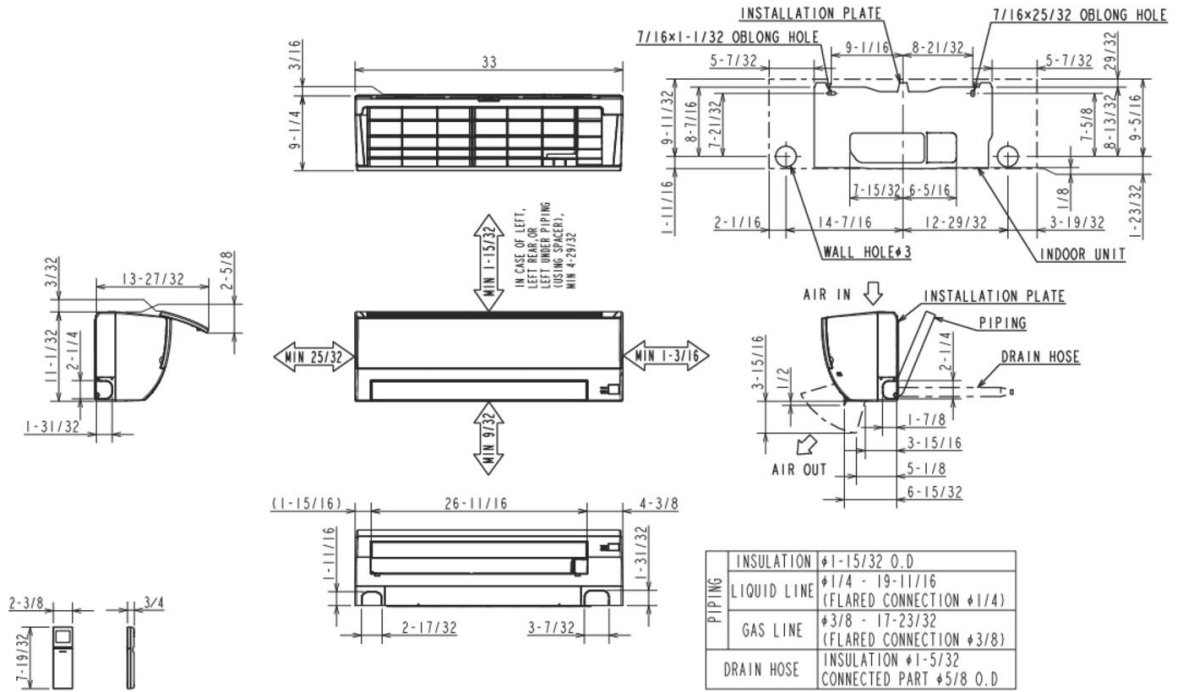
³ Heating at 17°F (-8.3°C) (Indoor // Outdoor) 70°F (21.1°C) DB, 60°F (15.6°C) WB // 17°F (-8.3°C) DB, 15°F (-9.4°C) WB

tHeating at 5°F (-15°C) (Indoor // Outdoor) 70°F (21.1°C) DB, 60°F (15.6°C) WB // 5°F (-15°C) DB, 4°F (-15.6°C) WB

uHeating at -4°F (-20°C) (Indoor // Outdoor) 70°F (21.1°C) DB, 60°F (15.6°C) WB // -4°F (-20°C) DB, -15°F (-26.1°C) WB

MSZ-HX12NL

Unit: inch

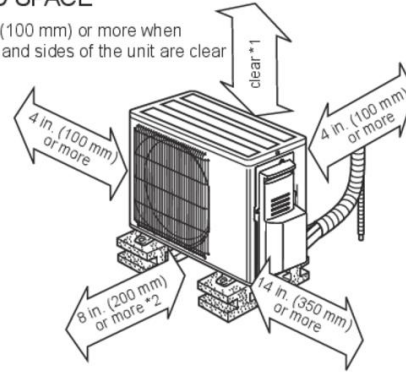


MUZ-HX12NLH2

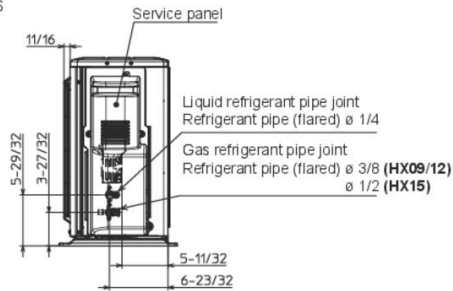
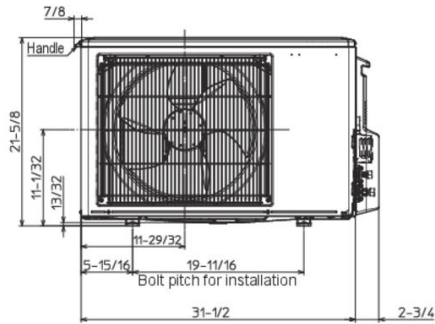
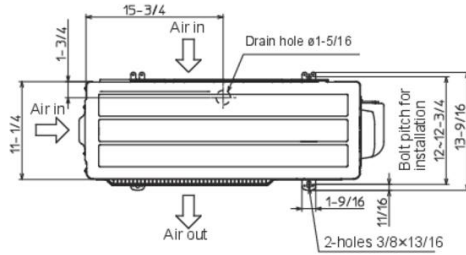
Unit: inch

REQUIRED SPACE

*1 4 in. (100 mm) or more when front and sides of the unit are clear



*2 When any 2 sides of left, right and rear of the unit are clear



REFRIGERANT PIPE JOINT	LIQUID REFRIGERANT PIPE	FLARED 1/4"
	GAS REFRIGERANT PIPE	FLARED 3/8" (HX09/12) 1/2" (HX15)